

Timpani

Rapsodia araba

per orchestra

Luigi Fiorentini

Moderato (♩ = 84)

13

19

29

44

54

79

93

96

113

120

142

f

mf

p

ff

f

mf

p

f

mf

f

p

ff

3

4

9

3

9

10

9

9

14

3

Timpani

2

Larg.tto app.(♩=56) All. moderato (♩ = 116)

152

ff **13** *mf* *ff*

177

p **15** *mf*

198

pp

205

f

213

Larghetto appassionato (♩ = 56) Allegretto (♩ = 92)

5 **16** **5** *p* *mf*

242

Adagio (♩ = 66) Allegretto (♩ = 92)

2 **20** **15** *p* *f*

281

285

f *mf* *f* *ff*

296

Andante (♩ = 80) And.scherz.(♩ = 88)

9 **7** **17** **9** **7** **5** **11** *mp*

361

mp **10** *p*

379

Più mosso (♩ = 100) And.scherz.(♩ = 88)

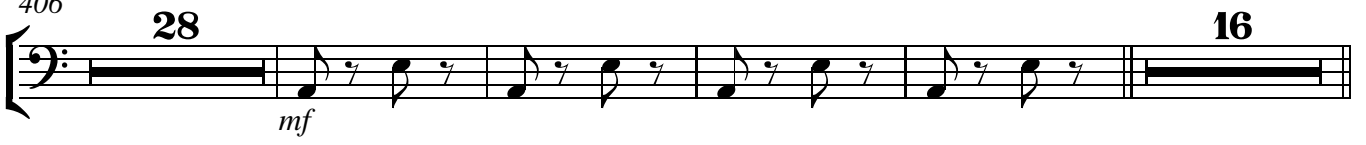
14 *mp* *f*

Timpani

399



406



454

