

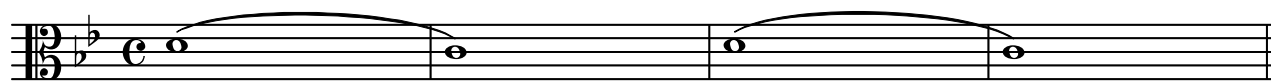
IL CANTICO DI FRATE SOLE

per Soprano, Coro, Orchestra da Camera con Oboe e Organo

Viola

Uberto Pieroni

Lentamente $\text{♩} = 68$



con sordina p



p



mf



Proprietà per tutti i paesi: IDYLLIUM Edizioni Musicali s. n. c. - Sede Legale Piazza Prealpi, 4 20155 MILANO

Sede Operativa: Viale dei Mille, 117 20051 LIMBIATE (MI) - ITALY - Tel e Fax: + 39 02 9961051

© Copyright 2005 by: IDYLLIUM Edizioni Musicali s. n. c.

Tutti i diritti sono riservati a termini di legge - All rights reserved. International copyright secured.



30 *mp*

34

38 *f*

42 *p*

47 *un poco rall...* *a tempo* *f*

51

56 *mp*

60 *mf*

64

un poco rall...

The musical notation consists of a single staff with a treble clef and a key signature of one sharp (F#). Measure 64 contains a half note G4. Measure 65 contains a quarter note G4, a quarter note A4, a quarter note B4, and a quarter note C5, all beamed together. Measure 66 contains a half note G4 with a fermata above it. A dynamic marking of *p* (piano) is placed below the staff at the beginning of measure 66. A hairpin symbol (a line that tapers from left to right) is positioned below the staff, starting under measure 65 and ending under measure 66, indicating a decrescendo.